

Professional On-Site Training Services

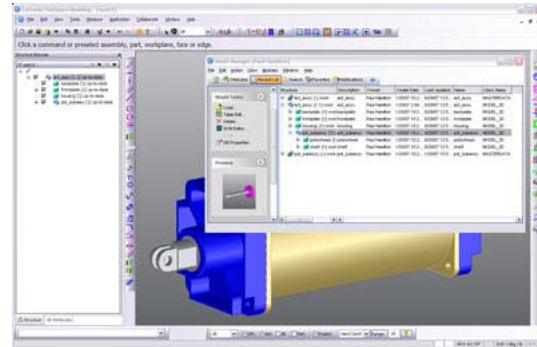
CoCreate Model Manager User Course

This course will show you how to manage **CoCreate Modeling** part, assembly and drawing data with **CoCreate Model Manager**. Includes saving, loading, and searching for data with **Model Manager**. Also covers how to view and manage database details.

Content

Managing Models with **Model Manager**

- Introduction to the user interface
- Version and assembly configuration management
- Saving, searching, and loading data
- Managing 2D/3D data associativity
- Creating thumbnail images
- Editing user preferences
- Adding attributes to 2D and 3D data
- Title blocks and text references for Annotation borders
- BOM creation and management
- Informal workflow (i.e., packets)



General Information

Course Number:	T210
Participants:	Max 12
Documentation:	Inclusive
Course Duration:	2 days

Participants & Prerequisites:

This class is ideal for current users of **CoCreate Modeling** who understand the need to better manage and organize part, assembly and drawing data.

To get the most from this course you should have prior knowledge of **CoCreate Modeling** and **Annotation**.

Registration Information

Interested in an on-site **CoCreate Model Manager** class? Send request to:

Training@phusionengineering.com

Or, call us at (970) 461-0070

On-Site classes can be tailored to your specific requirements and environment.