

Professional Web-Based Training Services

CoCreate Model Manager - QuickStart

All New Materials for v14.0 to v15.5

This is a virtual web-based course designed for **CoCreate Modeling** users that will be using **Model Manager** to manage their **Modeling** data. By the end of this class you will know how to find, create, load, change and save models directly from **Modeling** into your company's design database, where you manage, share and track your design data. Students will work through several exercises that take them through much of the functionality of **Model Manager**.

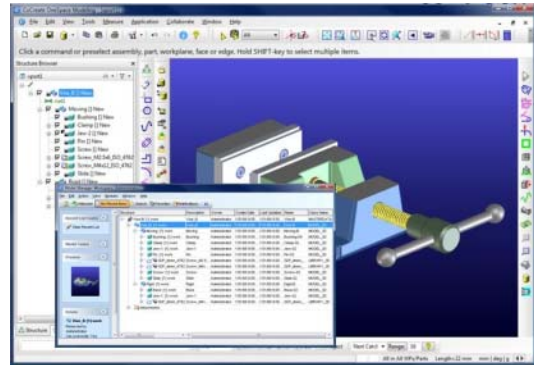
Course Content

Session 1 (3 hours)

- Model Manager Overview
- Startup / Login
- User Interface
- Save / Load
- Structure Browser
- Finding Data
- Part Modify / Revisions

Session 2 (3 hours)

- Drawings / Title Blocks
- Reserve / Unreserve
- Packets / Projects / Folders
- Subscriptions / Notifications
- Avoiding & Resolving Conflicts
- Partial & Lightweight Load
- Snapshots
- BOM



General Information

| | |
|------------------|---------------------|
| Course Number: | V210 |
| Participants: | Max 10 |
| Documentation: | Inclusive |
| Course Duration: | 6 hrs in 2 sessions |

Audience & Prerequisites:

This class is designed for users that are experienced with **CoCreate Modeling** and will be using **Model Manager** to manage their design data.

Registration Information

Interested in a custom virtual class? Send request to:

Training@phusionengineering.com

Or, call us at (970) 461-0070

For our standard training schedule, visit:

[Phusion Training Schedule](#)

Phusion Engineering Solutions LLC

Office: (970) 461-0070

Fax: (970) 461-0074

Web: www.PhusionEngineering.com

training@phusionengineering.com