

Professional On-Site Training Services

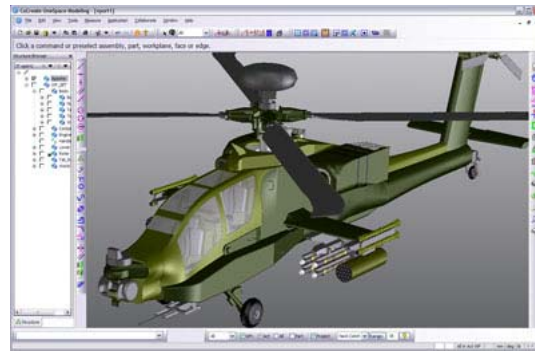
CoCreate Modeling Advanced

The **CoCreate Modeling Advanced** Course gives you a deeper understanding of the internal workings of **CoCreate Modeling**. Learn more about sophisticated modeling techniques, as well as additional functionality, that takes you beyond that covered in **CoCreate Modeling**. Freeform capabilities are addressed in much greater depth and detail so you can get the most from CoCreate Modeling's lofting capabilities.

Content

Advanced modeling with **CoCreate Modeling**

- 3D theory
- Parts, assembly, structures and filling methods
- Advanced machining
- Advanced modifying
- Advanced surfacing
- Non-manufacturability parts
- Advanced annotating
- The GD&T Advisor
- The Machining module



General Information

Course Number:	T201
Participants:	Max 12
Documentation:	Inclusive
Course Duration:	2 days

Participants & Prerequisites:

This class is ideal for people who want to understand and take advantage of the advanced functionality in **CoCreate Modeling**. It is especially beneficial for users who are creating and/or working with complex parts or large assemblies.

Before attending this course, you must have completed a **CoCreate Modeling** or **SolidDesigner** Base Course and have several months experience using **CoCreate Modeling** or **SolidDesigner**.

Registration Information

Interested in an on-site **CoCreate Modeling Advanced** class? Send request to:

Training@phusionengineering.com

Or, call us at (970) 461-0070

On-Site classes can be tailored to your specific requirements and environment.